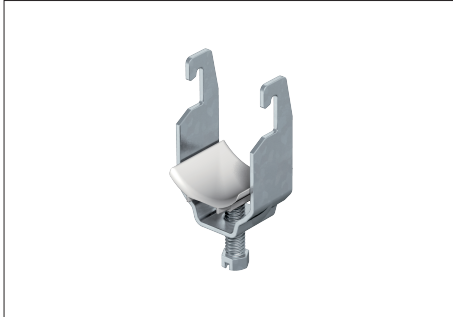
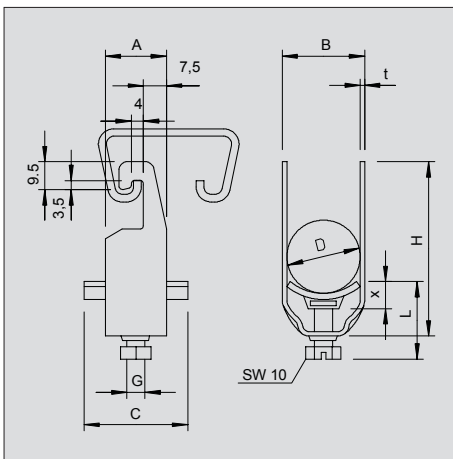


Clamp clip, single, plastic pressure trough



Suitable for all C profile rails with slot width 18 and 22 mm. Also suitable for flat, angle and U steel of 4 - 12 mm material thickness.
BBS clamp and bolt made of hot-dip galvanised steel. Polypropylene pressure sleeve, halogen-free, colour light grey RAL 7035.



| Type | Clamping range D mm | Pack. pcs | Weight kg/100 pcs. | Item No. |
|--------------|---------------------|-----------|--------------------|-----------|
| 2056U 12 FT | 8-12 | 100 | 3,150 | 1175 12 2 |
| 2056U 16 FT | 12-16 | 100 | 3,600 | 1175 16 5 |
| 2056U 22 FT | 16-22 | 100 | 4,200 | 1175 21 1 |
| 2056U 28 FT | 22-28 | 100 | 5,800 | 1175 28 9 |
| 2056U 34 FT | 28-34 | 100 | 7,500 | 1175 34 3 |
| 2056U 40 FT | 34-40 | 100 | 8,100 | 1175 40 8 |
| 2056U 46 FT | 40-46 | 100 | 10,000 | 1175 46 7 |
| 2056U 52 FT | 46-52 | 100 | 11,200 | 1175 52 1 |
| 2056U 58 FT | 52-58 | 100 | 13,400 | 1175 58 0 |
| 2056U 64 FT | 58-64 | 100 | 14,300 | 1175 64 5 |
| 2056U 70 FT | 64-70 | 50 | 15,250 | 1175 69 6 |
| 2056U 76 FT | 70-76 | 25 | 20,600 | 1175 76 9 |
| 2056U 82 FT | 76-82 | 25 | 22,000 | 1175 82 3 |
| 2056U 90 FT | 82-90 | 25 | 26,200 | 1175 90 4 |
| 2056U 100 FT | 90-100 | 25 | 30,000 | 1175 99 8 |

St Steel FT Hot-dip galvanised



Important dimensions, clamp clip

| EN | A | B | C | G | t | x | H | L |
|--------|----|-----|----|----|-----|-----|-----|------|
| mm | mm | mm | mm | mm | mm | mm | mm | mm |
| 8-12 | 20 | 16 | 34 | M6 | 1,5 | 5 | 42 | 34 |
| 12-16 | 20 | 20 | 34 | M6 | 1,5 | 5 | 46 | 34 |
| 16-22 | 20 | 27 | 34 | M6 | 1,5 | 5 | 53 | 34 |
| 22-28 | 20 | 33 | 34 | M6 | 2 | 5 | 59 | 34 |
| 28-34 | 20 | 39 | 34 | M8 | 2 | 5,5 | 67 | 37,5 |
| 34-40 | 20 | 45 | 34 | M8 | 2 | 5,5 | 73 | 37,5 |
| 76-82 | 25 | 88 | 40 | M8 | 2,5 | 6,5 | 116 | 45,5 |
| 82-90 | 25 | 97 | 40 | M8 | 3 | 6,5 | 125 | 45,5 |
| 90-100 | 25 | 107 | 40 | M8 | 3 | 6,5 | 135 | 45,5 |
| 40-46 | 20 | 51 | 40 | M8 | 2 | 5,5 | 79 | 37,5 |
| 46-52 | 20 | 57 | 40 | M8 | 2 | 6,5 | 85 | 38,5 |
| 52-58 | 23 | 64 | 40 | M8 | 2,5 | 6,5 | 91 | 38,5 |
| 58-64 | 23 | 70 | 40 | M8 | 2,5 | 6,5 | 97 | 38,5 |
| 64-70 | 23 | 76 | 40 | M8 | 2,5 | 6,5 | 103 | 38,5 |
| 70-76 | 25 | 82 | 40 | M8 | 2,5 | 6,5 | 110 | 45,5 |